

# **RIVER WENNING GROUP, BENTHAM, NORTH YORKSHIRE**



## **A REPORT ON A ONE YEAR WATER QUALITY TESTING PROJECT EXAMINING POLLUTION LEVELS IN A ONCE THRIVING RIVER CATCHMENT**

# POLLUTION IN A ONCE THRIVING RIVER

## Introduction

The River Wenning Group is an unincorporated association based in Bentham which aims:

- to help maintain the River Wenning and its catchment area as a clean and safe environment for people and wildlife.
- to test its water quality and contribute to preventing any pollution.
- to learn about and protect native plants, animals, fish, and water creatures from invasive species.
- to celebrate the heritage of the River Wenning and those who live and work along its course.

Over the last year we have organised events and collaborated with other similar organisations across the North of England, principally the Lune Rivers Trust and the Ilkley Clean River Group.

This report documents our work on testing the water quality of the River Wenning catchment over a 12-month period, May 2024 – April 2025.

The analysis:

- examines the published data on Sewage discharge into the river over the period 2022 – 2024.

- Explains the results of the water quality analysis done by the Group testing for coliform bacteria, phosphates and nitrates when compared to the guidelines for inland bathing water status, drinking water status, and ammonia toxicity levels for aquatic life.

## **Findings**

The river water sample laboratory testing conducted by the River Wenning Group has shown the heavy pollution of the river with E. coli and Intestinal Enterococci exceed safe levels for inland bathing water. The levels of ammonia often exceed the safe toxicity levels for aquatic life.

At present the situation looks bleak for the River Wenning.

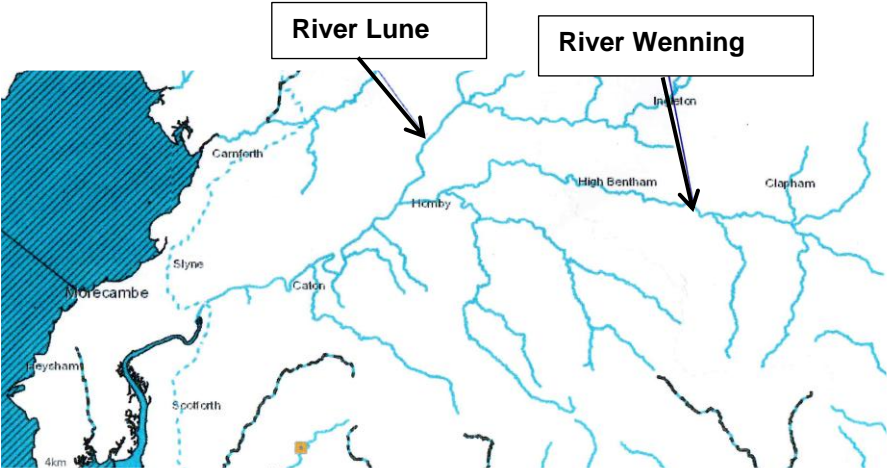
## **River Wenning Group May 2025**

# POLLUTION IN A ONCE THRIVING RIVER

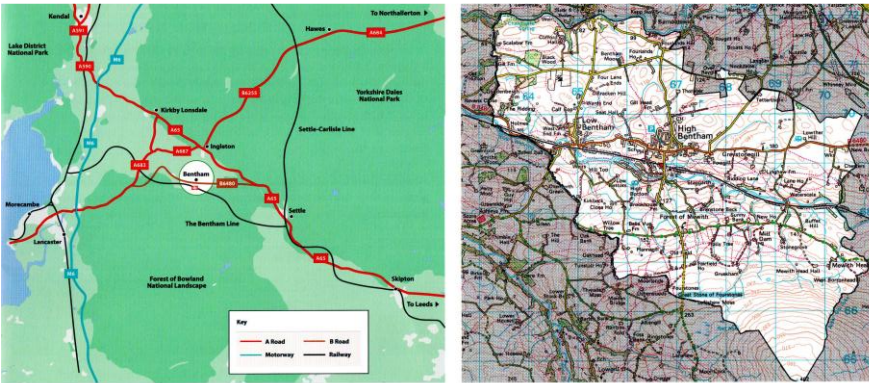
## Contents

	Page
River Wenning Catchment	5
Sewage Spills into the River Wenning	6
River Wenning Water Quality Testing sites	12
Water Testing Results Full Year: May 2024 – April 2025	14
Appendices	
• UK Water Quality Standards	22
• Water Quality Test Reports (Simplex Health) May 2024 – April 2025	27

# River Wenning Catchment



## Bentham Location and Parish Boundary



# SEWAGE SPILLS INTO THE RIVER WENNING

## Published Environment Agency Data 2022 - 2024

Sewage Storm Outlet figures released at the end of March 2025 by the Environment Agency reveals that sewage pollution into the River Wenning by the six United Utilities Wastewater Treatment Works (WwTWs) along its length rose by over 12% in 2024 and the duration of the spills (in hours) also increased.

The WwTWs on the River Wenning are at:

- Austwick Pumping Station, south of the A65, which discharges to the WwTW at Clapham, south of the A65.
- Clapham WwTW which discharges into the River Wenning
- High and Low Bentham WwTWs with storm overflow tanks
- Wray and Hornby WwTWs

Comparing previous years, in 2022, the six Waste Water Treatment Works (WwTW) discharged 243 times for 2377 hours, equivalent to 99.0 days; in 2023 they discharged 586 times for 4110 hours, equivalent to 171.3 days; and in 2024 whilst the number of discharges reduced to 511 times, the duration was 4595 hours, equivalent to 191.5 days.

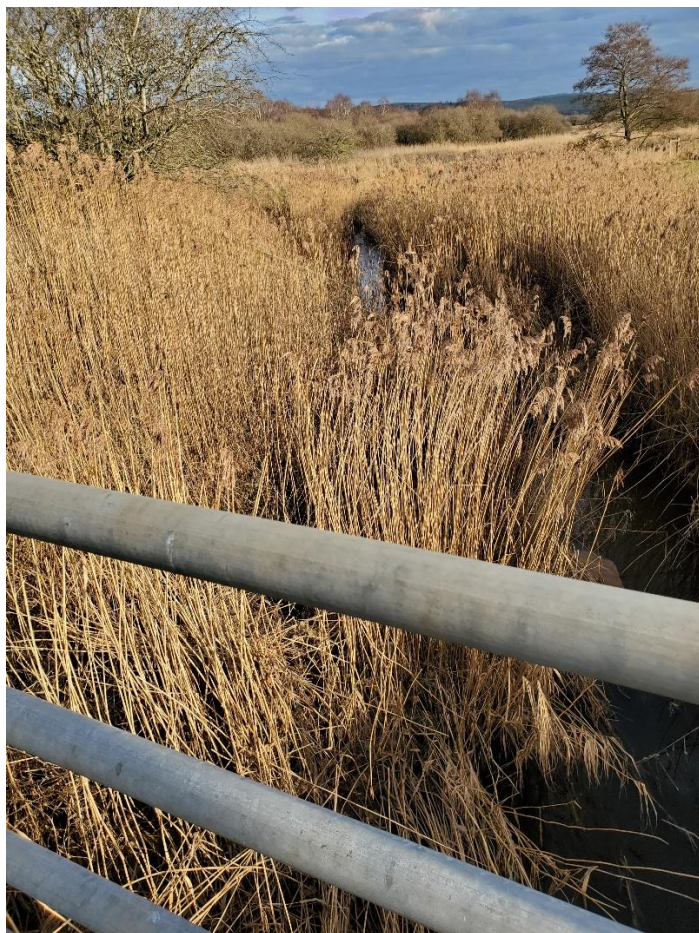
STORM OUTLET LOCATION	UID*	2022 TIMES	2022 DURATION (HOURS)	2023 TIMES	2023 DURATION (HOURS)	2024 TIMES	2024 DURATION (HOURS)
AUSTWICK PUMPING STATION (Into Fen Beck via drying beds)	UUP00160	75	1516.7	103	1972.0	117	2155.8
CLAPHAM WWTW	UUP00492	5	50.6	61	376.0	3	83.5
HIGH BENTHAM WWTW	UUP00955	163	855.1	115	412.0	140	1341.4
STORM TANK OVERFLOW	UUP06954			97	1173.0	81	200.5
LOW BENTHAM WWTW (STORM TANK OVERFLOW)	UUP0U94	Not metered		0	0.0	100	723.2
WRAY WWTW (INTO R.HINDBURN)	UUP02179	Not metered		181	166.0	39	91.0
HORNBY	UUP00789	Not Metered		29	11.0	31	0.3
TOTALS		243	2377.0	586	4110.0	511	4595.7
DIVIDE HOURS BY 24 = DAYS			99.0		171.3		191.5

\*Meter Unique Identity Numbers changed in 2024

2024 was worse than previous years due to the heavy rainfall experienced in the first few months of the year, which was the heaviest since records began 160 years ago.

Increased rainfall exacerbates the situation in the Wenning particularly, because the first WwTW upriver, Austwick Pumping Station, which normally pumps raw sewage to Clapham WwTW, cannot cope with significant storm rainfall and is designed to overflow into Austwick Moss, a 'reed drying bed.'





## **Austwick Moss**

This is a natural environment that, effectively managed, breaks down sewage in 7 to 9 days. However, with heavy rainfall, the sewage is almost immediately washed off into Fen Beck before breaking down. The confluence of Fen Beck with Kettles Beck, forms the start of the River Wenning.





**Clapham Beck, Austwick Beck, Kettles Beck and Fen Beck combine to form the River Wenning**



**Bentham WwTW Storm Overflow**

## United Utilities Investment Plan for River Wenning 2025-50

North Yorkshire Council has identified Bentham as a location for growth with more new housing planned up to 2032. However, United Utilities investment plans to 2025-2050 include limited action to compensate for the increased sewage pollution this is likely to add to the stress on the river.

WwTW	Asset ID	Target date	2020 spills	2021 spills	2022 spills	2023 spills	Baseline	Forecast 2030	Forecast 2050	Planned Improvements
Austwick	UUP00160	2045	116	106	75	103	116	90	10	TBC
Clapham	UUP00492	Meets targets	2	3	5	61	2	2	2	TBC
High Bentham	UU00955	2029	160	102	106	115	160	10	10	Storage; Nature based (SuDS or Wetland) Other TBC
Low Bentham	UUP0U94	2029	216	0	0	0	216	10	10	Storage; Increase flow to treatment; Screen; Nature based (SuDS or Wetland)
Wray	UUP02179	2029	238	209	215	181	238	10	10	Storage; screen; Nature based SuDS or Wetland; other TBC
Hornby	UUP00789	2040	112	94	15	29	112	54	10	Screen
SuDS = Sustainable drainage systems TBC = to be confirmed. Screen = metal grille on Storm Outlet										

Planned improvements are:

- Sustainable Drainage Systems (SuDS) manage surface water runoff in a way that mimics natural drainage, minimising the impact of urban development on water quality and quantity. SuDS systems often incorporate features such as green roofs, permeable pavements, and ponds, which help to store, infiltrate, and filter rainwater, reducing flood risk and improving water quality. This is

more suitable for new housing development than existing town and village infrastructures.

- Wetland is a natural filtration system, like Austwick Moss.
- Storm 'holding' tanks collect excess rainwater above the WwtW's capacity during storms; they need to cope with forecast future rainfall levels.
- Increased flow to treatment is achieved by expanding the WwtW capacity to manage increasing rainfall and sewage volumes.
- Screens are metal grilles fixed on the storm outlet to hold back 'solids', such as wet wipes, in non-treated sewage (storm) outflows.

## **Impact on the River Wenning**

There are no definite plans to reduce the sewage spills by improving the facilities at Austwick or to address the runoff problems at the reed drying bed at Austwick Moss. Whilst there are plans to expand the storage and implement sustainable drainage systems at Bentham this will not prevent the pollution which has already happened in the upper catchment.

At present the River Wenning is likely to deteriorate further over the next few years.

# RIVER WENNING WATER QUALITY TESTING SITES

## Description of the 6 Test sites

### **1 Austwick WwTW**

#### **Fen Beck Kettles Beck Waters meet.**

Test from Waters Meet Bridge, Fummerber Lane. GR SD750668

The confluence of Fen and Kettles Becks is just upriver of the bridge - this site was chosen as the storm drain outflows into Austwick Moss which drains into Fen Beck. These two Becks with Austwick Beck (which has no connection with the WwTW) and Clapham Beck form the head waters of the River Wenning.

Testing at this location provides an indication about how effective the reed beds are in breaking down the raw sewage and what pollution, if any, then flows into the Wenning.

No testing upriver of the WwTW or Fen Beck is necessary as no water course flows near the WwTW, and non-storm drain sewage is pumped to Clapham WwTW and thus treated water flows out from the latter WwTW, not Austwick.

### **2 Clapham WwTW**

#### **Clapham Beck**

**2.1** Test Clapham Beck upriver of the WwTW. GR SD688743

North side of the bridge carrying the A65 - this consists of two tunnels with a public ramp down giving easy access to the Beck, which flows through one or both tunnels dependant on the height of water.

Testing here gives an indication of the purity of the water flowing from the upper fells into the Wenning.

## **Wenning Bank Combined Flow**

**2.2** Test east of Clapham Station at railway viaduct on Eldroth road. GR SD733676 The storm outflow exits here, and the treated water outflow and all four headwaters have joined upriver. It is a convenient spot as parking is available nearby at Clapham Station.

## **3 High Bentham WwTW Upstream**

### **Bentham WwTW Upstream**

**3.1** Test just upriver of storm outflow opposite the end of the Wwtw. GR SD662689 Accessed from the public footpath on the north bank.

### **Bentham WwTW Downstream**

**3.2** Test just down river of the storm outflow. GR SD659691 Accessed from the same public footpath on the north bank.

## **4 Low Bentham WwTW**

### **Wennington Bridge**

Test location down river under the road bridge at Wennington. GR SD699617

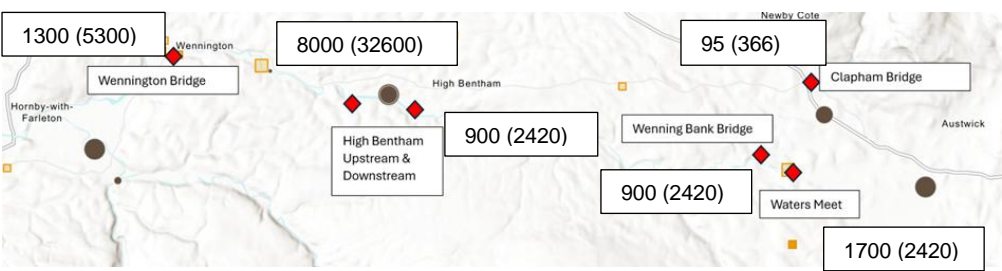
It is not necessary to test upriver of this outflow as we will know what is coming downriver from the tests at High Bentham.

*(GR = National Grid References on Ordnance Survey Explorer maps OL2 Yorkshire Dales Southern & Western Areas and OL41 Forest of Bowland & Ribblesdale)*

# Water Testing Results

## Full Year: May 2024 – April 2025

### Location Map of Test Sites on Wenning and Tributaries



### Key



WwTW

Testing Site

#### Treated sewage discharges



Sewage - water company



Sewage - not water company

### Summary

The report shows the average water quality test results for the last year by testing site on the River Wenning and tributaries. The map shows the average level of E. coli (cfus) pollutants at each testing site over the 12-month period May 2024 – April 2025. The figures in (brackets) are for the highest recorded reading over the period at each site.

The UK standards for Inland Bathing Water are:

- Max E. coli cfu/100mls = 900cfu/100ml for Inland Bathing waters
- Max Intestinal Enterococci cfu/100mls = 330cfu/100ml for Inland Bathing waters

On the River Wenning, the high concentration of CFUs from Fen Beck and Kettles Beck are diluted by water from Clapham Beck below Wenning Bank Bridge, this continues until the storm overflow from Bentham WwTW. The inflow from Bentham WwTW outlet raises the level significantly and this is diluted as the water flows downstream to Wennington Bridge.

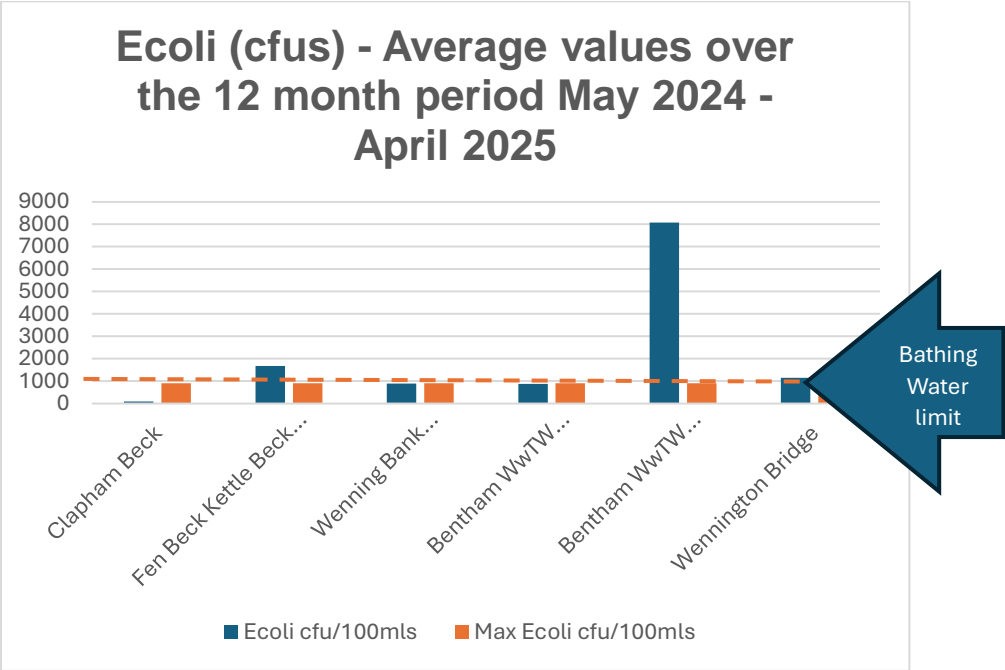
The amount of CFUs in the river below Wenning Bank Bridge on the days assessed is consistently above the level specified for Inland bathing waters.

Ammonia levels are consistent at all sites hovering around the toxicity threshold for aquatic life of 0.5 mg/l.

Phosphate levels are low until below Bentham WwTW where they peak at 0.5mg/l; this is well above the threshold for drinking water of 0.1mg/l.



# Average E. coli and Intestinal Enterococci (cfus) levels over the 12-month period May 2024 – April 2025

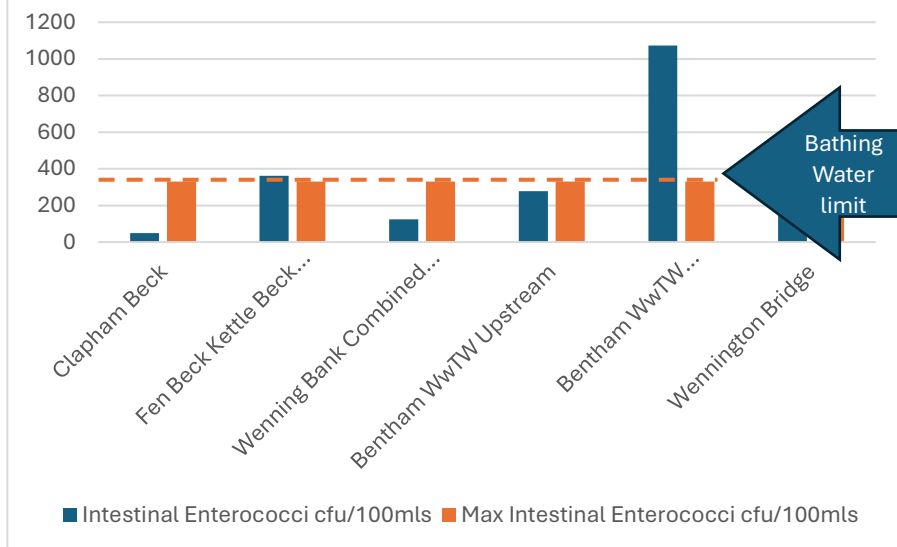


Direction of Water Flow

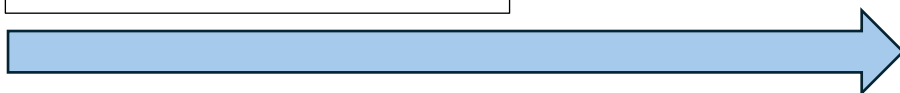


E. coli (cfus) are consistently above the threshold for bathing status throughout the entire River Wenning watercourse.

## Intestinal Enterococci (cfus) - Average values over the 12 month period May 2024 - April 2025



Direction of Water Flow



Enterococci (cfus) are around the threshold for bathing water status until downstream of the Bentham WwTW where they rise significantly until reducing back down as the water is diluted approaching Wennington Bridge. However, at peak flow anywhere below Waters Meet is affected by above acceptable levels for inland bathing water.

## **Average Phosphate and Ammonia levels over the 12-month period May 2024 – April 2025**

In the UK, phosphate and nitrate are assigned to three nutrient pollution categories:

- Clean Water: Phosphate <0.05 mg/l, Nitrate <0.5 mg/l
- Some pollution: Phosphate 0.05 to 0.1 mg/l, Nitrate 0.5 to 1 mg/l
- High levels of nutrient pollution: Phosphate >0.1 mg/l, Nitrate >1 mg/l

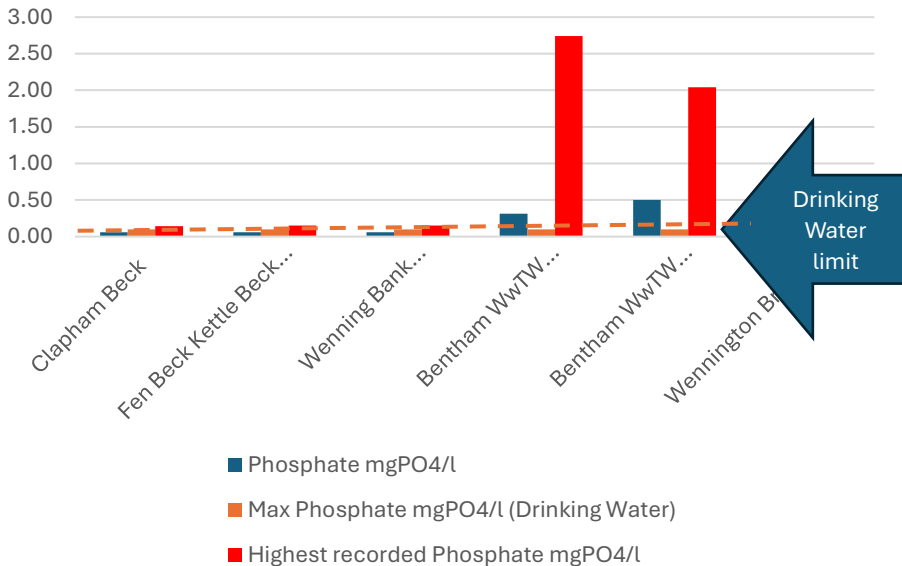
This is a general guide only, levels vary between waterbodies, like canals, ponds, rivers; also due to geology and local climate.

There is no drinking water standard for ammonia, however, ammonia seriously affects aquatic life. Toxic levels of ammonia vary depending on the water source, pH, and temperature. Toxicity to aquatic life occurs at levels between 0.53 and 22.8 mg/l. In the UK, Environmental Quality Standards (WFD, 2017) protect our watercourses and consider ammonia concentrations exceeding 0.3 to 0.6 mg/l have detrimental toxic impacts on fish and other aquatic life. In the report we have assumed any measurements above 0.5mg/l to be toxic to local aquatic life.

### **Phosphates**

Average Phosphate levels are below the drinking water threshold until Bentham WwTW where they peak at 0.5mg/l; this is well above the threshold for drinking water of 0.1mg/l. However, peak levels measured during the testing exceeded the maximum threshold at all six testing sites.

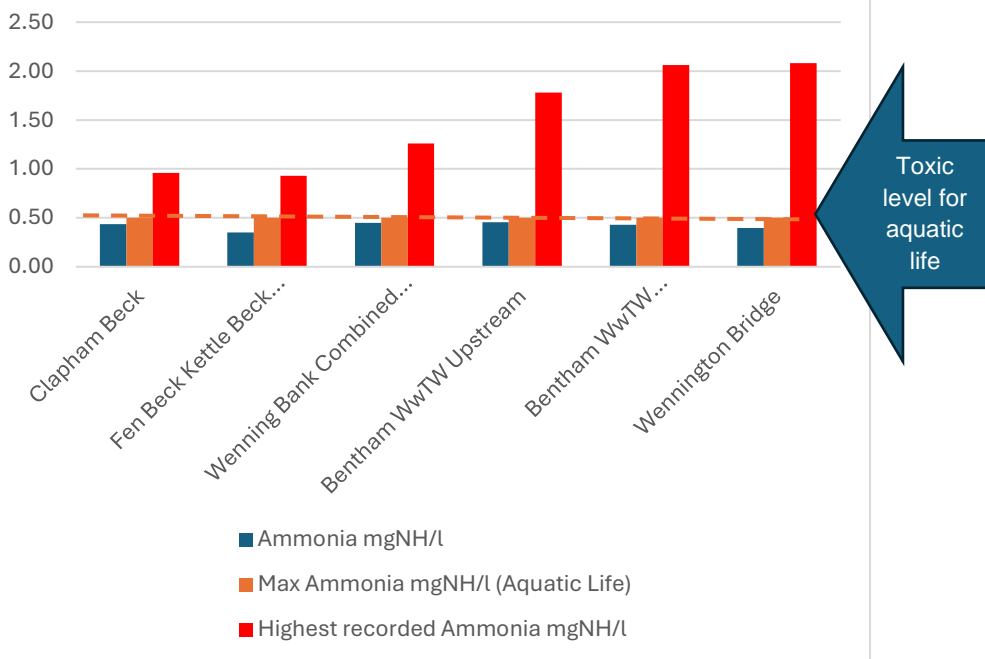
## Average Phosphate levels (incl highest recorded) over the 12 month period May 2024 - April 2025



## Ammonia

Ammonia levels are consistent at all sites hovering around the maximum threshold for aquatic life of 0.5 mg/l. However, peak levels measured during the testing significantly exceeded the maximum threshold at all six testing sites.

## Average Ammonia levels (incl. highest recorded) over the 12 month period May 2024 - April 2025



## Conclusion

The bacteria levels in the river below Wenning Bank Bridge are consistently above the level specified for Inland bathing waters.

Ammonia levels are consistent at all testing sites hovering around the toxicity threshold for aquatic life of 0.5 mg/l. However, at peak times ammonia levels can reach four times the threshold.

Phosphate levels are low until below Bentham WwTW where they peak at 0.5mg/l; this is well above the threshold for drinking water of 0.1mg/l.

# River Wenning Catchment

## Appendices

### **1. Water Quality Standards**

### **2. Water Quality Test Reports (Simplex Health)**

**May 2024 – April 2025**

# Appendix 1

## UK Water Quality Standards

### Water Testing - Classification and understanding results.

For bacteria, the guidelines determine the safe levels of E. coli as well as Intestinal Enterococci. E. coli is a type of coliform bacteria and both are tested, therefore the report will also include the level of total coliform bacteria although there is no parameter set for total coliform bacteria in the Bathing Water Guidelines.

The water quality is generally classed as excellent, good, sufficient, or poor – based on the number of colony forming units per 100ml (cfu/100ml). Swimming should not take place in poor quality water. The Bathing Water guidelines in the table below are used for classification after long term testing. For irregular and one-off tests, the standards for excellent / sufficient / poor are considered most appropriate. The rating of good should be looked at for regular testing only where the results are averaged out (see \* & \*\* for the percentiles).

The criteria for coastal and inland bathing waters are different. The thresholds for classifications are as follows:



Parameter	Value Maximum
Escherichia Coli (E. coli) (cfu/100ml)	<p>Inland Waters: excellent: &lt;500*, good: &lt;1000*, sufficient: &lt;900**, poor (= FAIL): &gt;900</p> <p>Coastal Waters: excellent: &lt;250*, good: &lt;500*, sufficient: &lt;500**, poor (= FAIL): &gt;500</p> <p>(*95th percentile, **90th percentile)</p>
Intestinal enterococci (cfu/100ml)	<p>Inland Waters: excellent: &lt;200*, good: &lt;400*, sufficient: &lt;330**, poor (= FAIL): &gt;330</p> <p>Coastal Waters: excellent: &lt;100*, good: &lt;200*, sufficient: &lt;185**, poor (= FAIL): &gt;185 (*95th percentile, **90th percentile)</p>

pH	6 to 9
Blue-green algae (cells/ml) ***	If visible bloom, count should be carried out; low: <20,000 (cells/ml); moderate: >20,000 – <100,000 (cells/ml); high (= FAIL): >100,000 (cells/ml)
Conductivity	The purer the water the lower the conductivity; not regulated but a useful early indicator for other potential problems with water quality. Typical range for freshwater streams is 100-2000 $\mu\text{S/cm}$ .
Appearance	No abnormal change in colour
Odour	None
Transparency	>1 metre

Surfactants	No lasting foam
Mineral Oils	No surface film or odour
Phenols	No phenolic odour

\*\*\*WHO guidance levels. Please note, that not all species of blue-green algae are toxic, and further investigation may be advisable where moderate levels are recorded.

These guidelines refer to regular monitoring where bathing sites receive a classification. For the classification, a regular monitoring schedule is necessary, the classification is based on a statistical measure of all samples, known as a percentile. Percentiles use the range of all samples taken to estimate the probability of higher results occurring. The classification uses either the 95% or 90% percentile depending on the classification.

As a general guideline\*\*, the results for phosphate & nitrate can be assigned to one of three nutrient pollution categories:

- Clean Water: Phosphate <0.05 mg/l, Nitrate <0.5 mg/l
- Some pollution: Phosphate 0.05 to 0.1 mg/l, Nitrate 0.5 to 1 mg/l
- High levels of nutrient pollution: Phosphate >0.1 mg/l, Nitrate >1 mg/l

(\*\*General guide only, levels vary between waterbodies, like canals, ponds, rivers, also due to geology and local climate)

- Toxic levels of ammonia vary depending on the water source, pH, and temperature. Toxicity to aquatic life has been reported at levels between 0.53 and 22.8 mg/l.

### **Water Quality Test Reports**

**(Simplex Health)**

**May 2024 – April 2025**

## LABORATORY REPORT

Order	SH1120WENNING		
Client	John Smithson	Report Date	17/05/2024
Deviating	N/A	Date Sample Taken	09/05/2024
Sampled By	JMS	Date Sample Arrived	10/05/2024
Report No	24-06073		

Location	Waters Meet Bridge		Sample No	1729985
Test	Limits		Result	
Total Coliforms, Method B2*, as MPN	As specified by customer		120400 cfu/100mls	
E.coli, Method B2*, as MPN	As specified by customer		112000 cfu/100mls	
Intestinal Enterococci, Method B6*	As specified by customer		2600 cfu/100mls	
Phosphate*	As specified by customer		< 0.050 mgPO4/l	
Ammonia*	As specified by customer		0.43 mgNH3/l	
Nitrate*	As specified by customer		1.66 mgNO3/l	

Location	Clapham Beck AGS		Sample No	1729986
Test	Limits		Result	
Total Coliforms, Method B2*, as MPN	As specified by customer		1987 cfu/100mls	
E.coli, Method B2*, as MPN	As specified by customer		81 cfu/100mls	
Intestinal Enterococci, Method B6*	As specified by customer		15 cfu/100mls	
Phosphate*	As specified by customer		< 0.050 mgPO4/l	
Ammonia*	As specified by customer		0.50 mgNH3/l	
Nitrate*	As specified by customer		0.65 mgNO3/l	

Location	Eldritch Road Viaduct		Sample No	1729987
Test	Limits		Result	
Total Coliforms, Method B2*, as MPN	As specified by customer		1987 cfu/100mls	
E.coli, Method B2*, as MPN	As specified by customer		1120 cfu/100mls	
Intestinal Enterococci, Method B6*	As specified by customer		70 cfu/100mls	
Phosphate*	As specified by customer		< 0.050 mgPO4/l	
Ammonia*	As specified by customer		0.28 mgNH3/l	
Nitrate*	As specified by customer		1.31 mgNO3/l	

Location	High Bentam Upstream		Sample No	1729988
Test		Limits	Result	
Total Coliforms, Method B2*, as MPN		As specified by customer	614 cfu/100mls	
E.coli, Method B2*, as MPN		As specified by customer	276 cfu/100mls	
Intestinal Enterococci, Method B6*		As specified by customer	39 cfu/100mls	
Phosphate*		As specified by customer	<0.050 mgPO4/l	
Ammonia*		As specified by customer	0.44 mgNH3/l	
Nitrate*		As specified by customer	1.18 mgNO3/l	

The Home of Quality Water Testing

## LABORATORY REPORT

Location	High Bentam Downstream		Sample No	1729989
Test	Limits	Result		
Total Coliforms, Method B2*, as MPN	As specified by customer	12800 cfu/100mls		
E.coli, Method B2*, as MPN	As specified by customer	2700 cfu/100mls		
Intestinal Enterococci, Method B6*	As specified by customer	800 cfu/100mls		
Phosphate*	As specified by customer	0.105 mgPO4/l		
Ammonia*	As specified by customer	< 0.01 mgNH3/l		
Nitrate*	As specified by customer	2.78 mgNO3/l		

Location	Wennington Bridge		Sample No	1729990
Test	Limits	Result		
Total Coliforms, Method B2*, as MPN	As specified by customer	2700 cfu/100mls		
E.coli, Method B2*, as MPN	As specified by customer	500 cfu/100mls		
Intestinal Enterococci, Method B6*	As specified by customer	100 cfu/100mls		
Phosphate*	As specified by customer	< 0.050 mgPO4/l		
Ammonia*	As specified by customer	0.11 mgNH3/l		
Nitrate*	As specified by customer	1.36 mgNO3/l		

**Authorised by:** J Baker

**Technical Admin Manager**

For and on Behalf of Meridian Science Ltd. (on Behalf of Simplex Health)

UKAS accreditation 2450, Accredited to ISO/EC 17025:2017. BS17025

### Disclaimers:

Tests denoted with a "\*" are not UKAS accredited. \*\*Indicates that analysis has been subcontracted to a UKAS testing laboratory. Opinions and interpretations expressed herein are outside the scope of our UKAS accreditation. Time 00:00 indicates no sampling time provided. Sample integrity is only assured from the time of delivery to the laboratory. Results expressed as 0/100mls implies none found in the sample examined. Test results only relate to the sample portion tested. Test reports shall not be reproduced except in full, without written approval. Total bacterial counts reported as >300cfu are estimated counts only. Date of testing on multi sample reports will be the date of the first sample tested. Data supplied by the customer that may effect the validity of the result is assumed to be correct and is outside the control of the laboratory. These results apply to the sample as received.

Sample Deviating Due To:

A-No sample date, B-No sample time, C-Incorrect sample container, D-Temperature of sample, E/F-Time between sampling & receipt/analysis exceeded.  
The effect of a deviating sample means that there is a possibility that the result provided may have been compromised.

### The Home of Quality Water Testing

Glenfield Investment Ltd T/A SimplexHealth is a company registered in England. Registered number: 07226894.  
VAT Reg GB126631526. Registered office: 62 York Road, Wellingborough, Northamptonshire, NN29 7SG, United Kingdom.  
SimplexHealth is a registered Trademark of Glenfield Investments Ltd No. 2650789

Page 2 of 2



## LABORATORY REPORT

Order	SH1121 Wenning		
Client	River Wenning Support Group	Report Date	17/06/2024
Deviating	D	Date Sample Taken	06/06/2024
Sampled By	DP	Date Sample Arrived	07/06/2024
Report No	24-07492		

Location	Waters Meet Bridge - Fen & Kettles Becks		Sample No	1737896
<b>Test</b>	<b>Limits</b>	<b>Result</b>		
Total Coliforms, Method B2*, as MPN	As specified by customer	3500 cfu/100mls		
E.coli, Method B2*, as MPN	As specified by customer	2420 cfu/100mls		
Intestinal Enterococci, Method B6*	As specified by customer	0 cfu/100mls		
Phosphate*	As specified by customer	< 0.050 mgPO4/l		
Ammonia*	As specified by customer	0.93 mgNH3/l		
Nitrate*	As specified by customer	1.07 mgNO3/l		

Location	Clapham Beck - North Side Of A65		Sample No	1737897
Test	Limits	Result		
Total Coliforms, Method B2*, as MPN	As specified by customer	276 cfu/100mls		
E.coli, Method B2*, as MPN	As specified by customer	69 cfu/100mls		
Intestinal Enterococci, Method B6*	As specified by customer	52 cfu/100mls		
Phosphate*	As specified by customer	< 0.050 mgPO4/l		
Ammonia*	As specified by customer	0.96 mgNH3/l		
Nitrate*	As specified by customer	0.21 mgNO3/l		

Location	Eldroth Road Viaduct		Sample No	1737898
Test	Limits	Result		
Total Coliforms, Method B2*, as MPN	As specified by customer	5900 cfu/100mls		
E.coli, Method B2*, as MPN	As specified by customer	1414 cfu/100mls		
Intestinal Enterococci, Method B6*	As specified by customer	182 cfu/100mls		
Phosphate*	As specified by customer	< 0.050 mgPO4/l		
Ammonia*	As specified by customer	1.26 mgNH3/l		
Nitrate*	As specified by customer	0.51 mgNO3/l		

Location	Upriver - Bentham WWTW		Sample No	1737899
Test		Limits	Result	
Total Coliforms, Method B2*, as MPN		As specified by customer	4100 cfu/100mls	
E.coli, Method B2*, as MPN		As specified by customer	2420 cfu/100mls	
Intestinal Enterococci, Method B6*		As specified by customer	500 cfu/100mls	
Phosphate*		As specified by customer	0.404 mgPO4/l	
Ammonia*		As specified by customer	1.78 mgNH3/l	
Nitrate*		As specified by customer	2.92 mgNO3/l	

The Home of Quality Water Testing

Glenfield Investment Ltd T/A SimplexHealth is a company registered in England. Registered number: 07226894.  
VAT Reg GB126631526. Registered office: 62 York Road, Wellingborough, Northamptonshire, NN29 7SG, United Kingdom.  
SimplexHealth is a registered Trademark of Glenfield Investments Ltd No.2650789

Page 1 of 2

## LABORATORY REPORT

Location	Downriver - Bentham WWTW		Sample No	1737900
Test	Limits	Result		
Total Coliforms, Method B2*, as MPN	As specified by customer	141400 cfu/100mls		
E.coli, Method B2*, as MPN	As specified by customer	22500 cfu/100mls		
Intestinal Enterococci, Method B6*	As specified by customer	1000 cfu/100mls		
Phosphate*	As specified by customer	< 0.050 mgPO <sub>4</sub> /l		
Ammonia*	As specified by customer	2.06 mgNH <sub>3</sub> /l		
Nitrate*	As specified by customer	0.83 mgNO <sub>3</sub> /l		

Location	Wennington Bridge		Sample No	1737901
Test	Limits	Result		
Total Coliforms, Method B2*, as MPN	As specified by customer	14300 cfu/100mls		
E.coli, Method B2*, as MPN	As specified by customer	5300 cfu/100mls		
Intestinal Enterococci, Method B6*	As specified by customer	900 cfu/100mls		
Phosphate*	As specified by customer	< 0.050 mgPO <sub>4</sub> /l		
Ammonia*	As specified by customer	2.08 mgNH <sub>3</sub> /l		
Nitrate*	As specified by customer	0.84 mgNO <sub>3</sub> /l		

**Authorised by:** J Baker

**Technical Admin Manager**

For and on Behalf of Meridian Science Ltd. (on Behalf of Simplex Health)

UKAS accreditation 2450, Accredited to ISO/EC 17025:2017. BS17025

### Disclaimers:

Tests denoted with a '\*' are not UKAS accredited. \*\*Indicates that analysis has been subcontracted to a UKAS testing laboratory. Opinions and interpretations expressed herein are outside the scope of our UKAS accreditation. Time 00:00 indicates no sampling time provided. Sample integrity is only assured from the time of delivery to the laboratory. Results expressed as 0/100mls implies none found in the sample examined. Test results only relate to the sample portion tested. Test reports shall not be reproduced except in full, without written approval. Total bacterial counts reported as >300cfu are estimated counts only. Date of testing on multi sample reports will be the date of the first sample tested. Data supplied by the customer that may effect the validity of the result is assumed to be correct and is outside the control of the laboratory. These results apply to the sample as received.

Sample Deviating Due To:

A-No sample date, B-No sample time, C-Incorrect sample container, D-Temperature of sample, E/F-Time between sampling & receipt/analysis exceeded.  
The effect of a deviating sample means that there is a possibility that the result provided may have been compromised.

### The Home of Quality Water Testing

Glenfield Investment Ltd T/A SimplexHealth is a company registered in England. Registered number: 07226894.  
VAT Reg GB126631526. Registered office: 62 York Road, Wellingborough, Northamptonshire, NN29 7SG, United Kingdom.  
SimplexHealth is a registered Trademark of Glenfield Investments Ltd No.2650789

Page 2 of 2



Glenfield Investment Ltd T/A  
SimplexHealth  
62 York Road  
Wellingborough  
NN29 7SG  
United Kingdom  
Telephone: +44 (0)1933 664746  
Email: [info@simplexhealth.co.uk](mailto:info@simplexhealth.co.uk)  
Web: <http://www.simplexhealth.co.uk>

## LABORATORY REPORT

Order	SH01168		
Client	BEST/River Wenning Group	Report Date	10/07/2024
Deviating	D	Date Sample Taken	02/07/2024
Sampled By	JS	Date Sample Arrived	03/07/2024
Report No	24-08838	Time Sample Taken	10:20

Location	Waters Meet		Sample No	1744960
	<b>Test</b>	<b>Limits</b>	<b>Result</b>	
	Total Coliforms, Method B2*, as MPN	As specified by customer	> 2420 cfu/100mls	
	E.coli, Method B2*, as MPN	As specified by customer	462 cfu/100mls	
	Intestinal Enterococci, Method B6*	As specified by customer	185 cfu/100mls	
	Phosphate*	As specified by customer	< 0.050 mgPO4/l	
	Ammonia*	As specified by customer	0.01 mgNH3/l	
	Nitrate*	As specified by customer	1.34 mgNO3/l	

Location	Clapham Beck		Sample No	1744961
	<b>Test</b>	<b>Limits</b>	<b>Result</b>	
	Total Coliforms, Method B2*, as MPN	As specified by customer	2000 cfu/100mls	
	E.coli, Method B2*, as MPN	As specified by customer	44 cfu/100mls	
	Intestinal Enterococci, Method B6*	As specified by customer	96 cfu/100mls	
	Phosphate*	As specified by customer	< 0.050 mgPO4/l	
	Ammonia*	As specified by customer	0.02 mgNH3/l	
	Nitrate*	As specified by customer	0.41 mgNO3/l	

Location	Eldroth Road		Sample No	1744962
	<b>Test</b>	<b>Limits</b>	<b>Result</b>	
	Total Coliforms, Method B2*, as MPN	As specified by customer	2420 cfu/100mls	
	E.coli, Method B2*, as MPN	As specified by customer	1554 cfu/100mls	
	Intestinal Enterococci, Method B6*	As specified by customer	143 cfu/100mls	
	Phosphate*	As specified by customer	< 0.050 mgPO4/l	
	Ammonia*	As specified by customer	0.06 mgNH3/l	
	Nitrate*	As specified by customer	1.00 mgNO3/l	

Location	High Bentham Up		Sample No	1744963
	<b>Test</b>	<b>Limits</b>	<b>Result</b>	
	Total Coliforms, Method B2*, as MPN	As specified by customer	2420 cfu/100mls	
	E.coli, Method B2*, as MPN	As specified by customer	817 cfu/100mls	
	Intestinal Enterococci, Method B6*	As specified by customer	238 cfu/100mls	
	Phosphate*	As specified by customer	< 0.050 mgPO4/l	
	Ammonia*	As specified by customer	0.04 mgNH3/l	
	Nitrate*	As specified by customer	0.80 mgNO3/l	

The Home of Quality Water Testing

Glenfield Investment Ltd T/A SimplexHealth is a company registered in England. Registered number: 07226694.  
VAT Reg GB126631526. Registered office: 62 York Road, Wellingborough, Northamptonshire, NN29 7SG, United Kingdom.  
SimplexHealth is a registered trademark of Glenfield Investments Ltd No. 2650789

Page 1 of 2

## LABORATORY REPORT

Location	High Bentham Down		Sample No	1744964
Test	Limits		Result	
Total Coliforms, Method B2*, as MPN	As specified by customer		58000 cfu/100mls	
E.coli, Method B2*, as MPN	As specified by customer		6100 cfu/100mls	
Intestinal Enterococci, Method B6*	As specified by customer		735 cfu/100mls	
Phosphate*	As specified by customer		0.859 mgPO <sub>4</sub> /l	
Ammonia*	As specified by customer		0.14 mgNH <sub>3</sub> /l	
Nitrate*	As specified by customer		5.46 mgNO <sub>3</sub> /l	

Location	Wennington		Sample No	1744965
Test	Limits		Result	
Total Coliforms, Method B2*, as MPN	As specified by customer		2800 cfu/100mls	
E.coli, Method B2*, as MPN	As specified by customer		32 cfu/100mls	
Intestinal Enterococci, Method B6*	As specified by customer		86 cfu/100mls	
Phosphate*	As specified by customer		< 0.050 mgPO <sub>4</sub> /l	
Ammonia*	As specified by customer		0.11 mgNH <sub>3</sub> /l	
Nitrate*	As specified by customer		0.99 mgNO <sub>3</sub> /l	

**Authorised by:** J Baker

**Technical Admin Manager**

For and on Behalf of Meridian Science Ltd. (on Behalf of Simplex Health)

UKAS accreditation 2450, Accredited to ISO/EC 17025:2017. BS17025

### Disclaimers:

Tests denoted with a "\*" are not UKAS accredited. \*\*Indicates that analysis has been subcontracted to a UKAS testing laboratory. Opinions and interpretations expressed herein are outside the scope of our UKAS accreditation. Time 00:00 indicates no sampling time provided. Sample integrity is only assured from the time of delivery to the laboratory. Results expressed as 0/100mls implies none found in the sample examined. Test results only relate to the sample portion tested. Test reports shall not be reproduced except in full, without written approval. Total bacterial counts reported as >300cfu are estimated counts only. Date of testing on multi sample reports will be the date of the first sample tested. Data supplied by the customer that may effect the validity of the result is assumed to be correct and is outside the control of the laboratory. These results apply to the sample as received.

Sample Deviating Due To:

A-No sample date, B-No sample time, C-Incorrect sample container, D-Temperature of sample, E/F-Time between sampling & receipt/analysis exceeded.

The effect of a deviating sample means that there is a possibility that the result provided may have been compromised.

The Home of Quality Water Testing

Glenfield Investment Ltd T/A SimplexHealth is a company registered in England. Registered number: 07226894.  
VAT Reg GB126631526. Registered office: 62 York Road, Wellingborough, Northamptonshire, NN29 7SG, United Kingdom.  
SimplexHealth is a registered Trademark of Glenfield Investments Ltd No. 2650789

Page 2 of 2

## LABORATORY REPORT

Order	Sh01169(Aug)		
Client	BEST/River Wenning Group	Report Date	14/08/2024
Deviating	D	Date Sample Taken	06/08/2024
Sampled By	XX	Date Sample Arrived	07/08/2024
Report No	24-10632	Time Sample Taken	10:15

Location	Waters meet bridge	Sample No	1754686
Test	Limits	Result	
Total Coliforms, Method B2*, as MPN	As specified by customer	1414 cfu/100mls	
E.coli, Method B2*, as MPN	As specified by customer	727 cfu/100mls	
Intestinal Enterococci, Method B6*	As specified by customer	143 cfu/100mls	
Phosphate*	As specified by customer	< 0.050 mgPO4/l	
Ammonia*	As specified by customer	0.29 mgNH3/l	
Nitrate*	As specified by customer	2.64 mgNO3/l	

Location	Clapham Beck A65	Sample No	1754687
Test	Limits	Result	
Total Coliforms, Method B2*, as MPN	As specified by customer	1414 cfu/100mls	
E.coli, Method B2*, as MPN	As specified by customer	144 cfu/100mls	
Intestinal Enterococci, Method B6*	As specified by customer	206 cfu/100mls	
Phosphate*	As specified by customer	< 0.050 mgPO4/l	
Ammonia*	As specified by customer	0.27 mgNH3/l	
Nitrate*	As specified by customer	1.56 mgNO3/l	

Location	Railway Viaduct Eldroth road	Sample No	1754688
Test	Limits	Result	
Total Coliforms, Method B2*, as MPN	As specified by customer	13800 cfu/100mls	
E.coli, Method B2*, as MPN	As specified by customer	1987 cfu/100mls	
Intestinal Enterococci, Method B6*	As specified by customer	185 cfu/100mls	
Phosphate*	As specified by customer	< 0.050 mgPO4/l	
Ammonia*	As specified by customer	0.35 mgNH3/l	
Nitrate*	As specified by customer	2.84 mgNO3/l	

Location	High Bentham upriver	Sample No	1754689
Test	Limits	Result	
Total Coliforms, Method B2*, as MPN	As specified by customer	17900 cfu/100mls	
E.coli, Method B2*, as MPN	As specified by customer	2420 cfu/100mls	
Intestinal Enterococci, Method B6*	As specified by customer	1000 cfu/100mls	
Phosphate*	As specified by customer	< 0.050 mgPO4/l	
Ammonia*	As specified by customer	0.28 mgNH3/l	
Nitrate*	As specified by customer	1.85 mgNO3/l	

The Home of Quality Water Testing

Glenfield Investment Ltd T/A Simplex-Health is a company registered in England. Registered number: 07226894.  
VAT Reg GB126631526. Registered office: 62 York Road, Wellingborough, Northamptonshire, NN29 7SG, United Kingdom.  
SimplexHealth is a registered Trademark of Glenfield Investments Ltd No. 2650789

Page 1 of 2

## LABORATORY REPORT

Location	High Bentham Downriver	Sample No	1754690
Test	Limits	Result	
Total Coliforms, Method B2*, as MPN	As specified by customer	52500 cfu/100mls	
E.coli, Method B2*, as MPN	As specified by customer	890 cfu/100mls	
Intestinal Enterococci, Method B6*	As specified by customer	500 cfu/100mls	
Phosphate*	As specified by customer	2.04 mgPO4/l	
Ammonia*	As specified by customer	0.56 mgNH3/l	
Nitrate*	As specified by customer	35.4 mgNO3/l	

Location	Wennington Bridge	Sample No	1754691
Test	Limits	Result	
Total Coliforms, Method B2*, as MPN	As specified by customer	1120 cfu/100mls	
E.coli, Method B2*, as MPN	As specified by customer	239 cfu/100mls	
Intestinal Enterococci, Method B6*	As specified by customer	59 cfu/100mls	
Phosphate*	As specified by customer	0.124 mgPO4/l	
Ammonia*	As specified by customer	0.40 mgNH3/l	
Nitrate*	As specified by customer	3.42 mgNO3/l	

Authorised by: L Bird

Technical Admin Manager

For and on Behalf of Mercian Science Ltd. (on Behalf of Simplex Health)

UKAS accreditation 2450, Accredited to ISO/IEC 17025:2017. BS17025

### Disclaimers:

Tests denoted with a '\*' are not UKAS accredited. \*\*Indicates that analysis has been subcontracted to a UKAS testing laboratory. Opinions and interpretations expressed herein are outside the scope of our UKAS accreditation. Time 00:00 indicates no sampling time provided. Sample integrity is only assured from the time of delivery to the laboratory. Results expressed as 0/100mls implies none found in the sample examined. Test results only relate to the sample portion tested. Test reports shall not be reproduced except in full, without written approval. Total bacterial counts reported as >300cfu are estimated counts only. Date of testing on multi sample reports will be the date of the first sample tested. Data supplied by the customer that may affect the validity of the result is assumed to be correct and is outside the control of the laboratory. These results apply to the sample as received.

Sample Deviating Due To:

A-No sample date, B-No sample time, C-Incorrect sample container, D-Temperature of sample, E/F-Time between sampling & receipt/analysis exceeded. The effect of a deviating sample means that there is a possibility that the result provided may have been compromised.

The Home of Quality Water Testing

Glenfield Investment Ltd T/A SimplexHealth is a company registered in England. Registered number: 07226894.  
VAT Reg GB126631526. Registered office: 62 York Road Wellingborough, Northamptonshire, NN29 7SG, United Kingdom.  
SimplexHealth is a registered Trademark of Glenfield Investments Ltd No. 2650789

## LABORATORY REPORT

Order	Sh01193(Sept)	Report Date	13/09/2024
Client	BEST/River Wenning Group	Date Sample Taken	03/09/2024
Deviating	DEF	Date Sample Arrived	05/09/2024
Sampled By	JMS	Time Sample Taken	10:15
Report No	24-12193		

Location	Waters meet bridge	Sample No	1763383
Test	Limits	Result	
Total Coliforms, Method B2*, as MPN	As specified by customer	5000 cfu/100mls	
E.coli, Method B2*, as MPN	As specified by customer	2420 cfu/100mls	
Intestinal Enterococci, Method B6*	As specified by customer	308 cfu/100mls	
Phosphate*	As specified by customer	0.153 mgPO4/l	
Ammonia*	As specified by customer	0.38 mgNH3/l	
Nitrate*	As specified by customer	0.93 mgNO3/l	

Location	Clapham Beck A65	Sample No	1763384
Test	Limits	Result	
Total Coliforms, Method B2*, as MPN	As specified by customer	379 cfu/100mls	
E.coli, Method B2*, as MPN	As specified by customer	44 cfu/100mls	
Intestinal Enterococci, Method B6*	As specified by customer	45 cfu/100mls	
Phosphate*	As specified by customer	0.146 mgPO4/l	
Ammonia*	As specified by customer	0.59 mgNH3/l	
Nitrate*	As specified by customer	0.47 mgNO3/l	

Location	Eldritch Road Viaduct	Sample No	1763385
Test	Limits	Result	
Total Coliforms, Method B2*, as MPN	As specified by customer	3900 cfu/100mls	
E.coli, Method B2*, as MPN	As specified by customer	2420 cfu/100mls	
Intestinal Enterococci, Method B6*	As specified by customer	276 cfu/100mls	
Phosphate*	As specified by customer	0.149 mgPO4/l	
Ammonia*	As specified by customer	0.57 mgNH3/l	
Nitrate*	As specified by customer	0.71 mgNO3/l	

Location	High Bentham upriver	Sample No	1763386
Test	Limits	Result	
Total Coliforms, Method B2*, as MPN	As specified by customer	3600 cfu/100mls	
E.coli, Method B2*, as MPN	As specified by customer	1414 cfu/100mls	
Intestinal Enterococci, Method B6*	As specified by customer	596 cfu/100mls	
Phosphate*	As specified by customer	0.151 mgPO4/l	
Ammonia*	As specified by customer	0.55 mgNH3/l	
Nitrate*	As specified by customer	0.64 mgNO3/l	

The Home of Quality Water Testing

Glenfield Investment Ltd T/A SimplexHealth is a company registered in England. Registered number: 07226894.  
VAT Reg GB126631526. Registered office: 62 York Road, Wellingborough, Northamptonshire, NN29 7SG, United Kingdom.  
SimplexHealth is a registered Trademark of Glenfield Investments Ltd No. 2650789

Page 1 of 2

## LABORATORY REPORT

Location	High Bentham Downriver	Sample No	1763387
Test	Limits	Result	
Total Coliforms, Method B2*, as MPN	As specified by customer	30800 cfu/100mls	
E.coli, Method B2*, as MPN	As specified by customer	3500 cfu/100mls	
Intestinal Enterococci, Method B6*	As specified by customer	760 cfu/100mls	
Phosphate*	As specified by customer	0.351 mgPO <sub>4</sub> /l	
Ammonia*	As specified by customer	0.16 mgNH <sub>3</sub> /l	
Nitrate*	As specified by customer	4.56 mgNO <sub>3</sub> /l	

Location	Wennington Bridge	Sample No	1763388
Test	Limits	Result	
Total Coliforms, Method B2*, as MPN	As specified by customer	7000 cfu/100mls	
E.coli, Method B2*, as MPN	As specified by customer	3000 cfu/100mls	
Intestinal Enterococci, Method B6*	As specified by customer	446 cfu/100mls	
Phosphate*	As specified by customer	0.156 mgPO <sub>4</sub> /l	
Ammonia*	As specified by customer	0.19 mgNH <sub>3</sub> /l	
Nitrate*	As specified by customer	0.75 mgNO <sub>3</sub> /l	

**Authorised by:** L Bird

**Technical Admin Manager**

For and on Behalf of Meridian Science Ltd. (on Behalf of Simplex Health)

UKAS accreditation 2450, Accredited to ISO/EC 17025:2017. BS17025

### Disclaimers:

Tests denoted with a '\*' are not UKAS accredited. \*\*Indicates that analysis has been subcontracted to a UKAS testing laboratory. Opinions and interpretations expressed herein are outside the scope of our UKAS accreditation. Time 00:00 indicates no sampling time provided. Sample integrity is only assured from the time of delivery to the laboratory. Results expressed as 0/100mls implies none found in the sample examined. Test results only relate to the sample portion tested. Test reports shall not be reproduced except in full, without written approval. Total bacterial counts reported as >300cfu are estimated counts only. Date of testing on multi sample reports will be the date of the first sample tested. Data supplied by the customer that may effect the validity of the result is assumed to be correct and is outside the control of the laboratory. These results apply to the sample as received.

Sample Deviating Due To:

A-No sample date, B-No sample time, C-incorrect sample container, D-Temperature of sample, E/F-Time between sampling & receipt/analysis exceeded. The effect of a deviating sample means that there is a possibility that the result provided may have been compromised.

### The Home of Quality Water Testing

Glenfield Investment Ltd T/A SimplexHealth is a company registered in England. Registered number: 07226894.  
VAT Reg GB126631526. Registered office: 62 York Road, Wellingborough, Northamptonshire, NN29 7SG, United Kingdom.  
SimplexHealth is a registered Trademark of Glenfield Investments Ltd No. 2650789

Page 2 of 2



## LABORATORY REPORT

Order	SH01194WENNINGOCT		
Client	BEST/River Wenning Group	Report Date	17/10/2024
Deviating	DEF	Date Sample Taken	30/09/2024
Sampled By	XX	Date Sample Arrived	01/10/2024
Report No	24-13569	Time Sample Taken	09:23

Location	Waters Meet Bridge		Sample No	1771762
Test		Limits	Result	
Total Coliforms, Method B2*, as MPN		As specified by customer	1987 cfu/100mls	
E.coli, Method B2*, as MPN		As specified by customer	649 cfu/100mls	
Intestinal Enterococci, Method B6*		As specified by customer	105 cfu/100mls	
Phosphate*		As specified by customer	< 0.050 mgPO4/l	
Ammonia*		As specified by customer	0.37 mgNH3/l	
Nitrate*		As specified by customer	0.99 mgNO3/l	

Location	Clapham Beck AGS		Sample No	1771763
Test		Limits	Result	
Total Coliforms, Method B2*, as MPN		As specified by customer	308 cfu/100mls	
E.coli, Method B2*, as MPN		As specified by customer	236 cfu/100mls	
Intestinal Enterococci, Method B6*		As specified by customer	78 cfu/100mls	
Phosphate*		As specified by customer	< 0.050 mgPO4/l	
Ammonia*		As specified by customer	0.56 mgNH3/l	
Nitrate*		As specified by customer	0.51 mgNO3/l	

Location	Eldritch Road Viaduct		Sample No	1771764
Test		Limits	Result	
Total Coliforms, Method B2*, as MPN		As specified by customer	1414 cfu/100mls	
E.coli, Method B2*, as MPN		As specified by customer	649 cfu/100mls	
Intestinal Enterococci, Method B6*		As specified by customer	65 cfu/100mls	
Phosphate*		As specified by customer	< 0.050 mgPO4/l	
Ammonia*		As specified by customer	0.55 mgNH3/l	
Nitrate*		As specified by customer	0.79 mgNO3/l	

Location	High Bentham Upstream		Sample No	1771765
Test		Limits	Result	
Total Coliforms, Method B2*, as MPN		As specified by customer	1300 cfu/100mls	
E.coli, Method B2*, as MPN		As specified by customer	614 cfu/100mls	
Intestinal Enterococci, Method B6*		As specified by customer	66 cfu/100mls	
Phosphate*		As specified by customer	< 0.050 mgPO4/l	
Ammonia*		As specified by customer	0.45 mgNH3/l	
Nitrate*		As specified by customer	0.65 mgNO3/l	

The Home of Quality Water Testing

Glenfield Investment Ltd T/A SimplexHealth is a company registered in England. Registered number: 07226894.  
WAT Reg GB126631526. Registered office: 62 York Road, Wellingborough, Northamptonshire, NN29 7SG, United Kingdom.  
SimplexHealth is a registered trademark of Glenfield Investments Ltd No. 2650789

## LABORATORY REPORT

Location	High Bentham Downstream	Sample No	1771766
Test	Limits	Result	
Total Coliforms, Method B2*, as MPN	As specified by customer	155400 cfu/100mls	
E.coli, Method B2*, as MPN	As specified by customer	32600 cfu/100mls	
Intestinal Enterococci, Method B6*	As specified by customer	2200 cfu/100mls	
Phosphate*	As specified by customer	< 0.050 mgPO <sub>4</sub> /l	
Ammonia*	As specified by customer	0.18 mgNH <sub>3</sub> /l	
Nitrate*	As specified by customer	2.08 mgNO <sub>3</sub> /l	

Location	Wennington Bridge	Sample No	1771767
Test	Limits	Result	
Total Coliforms, Method B2*, as MPN	As specified by customer	4600 cfu/100mls	
E.coli, Method B2*, as MPN	As specified by customer	1733 cfu/100mls	
Intestinal Enterococci, Method B6*	As specified by customer	192 cfu/100mls	
Phosphate*	As specified by customer	< 0.050 mgPO <sub>4</sub> /l	
Ammonia*	As specified by customer	0.23 mgNH <sub>3</sub> /l	
Nitrate*	As specified by customer	0.72 mgNO <sub>3</sub> /l	

**Authorised by:** L Bird

**Technical Admin Manager**

For and on Behalf of Meridian Science Ltd. (on Behalf of Simplex Health)

UKAS accreditation 2450, Accredited to ISO/EC 17025:2017. BS17025

### Disclaimers:

Tests denoted with a '\*' are not UKAS accredited. \*\*Indicates that analysis has been subcontracted to a UKAS testing laboratory. Opinions and interpretations expressed herein are outside the scope of our UKAS accreditation. Time 00:00 indicates no sampling time provided. Sample integrity is only assured from the time of delivery to the laboratory. Results expressed as 0/100mls implies none found in the sample examined. Test results only relate to the sample portion tested. Test reports shall not be reproduced except in full, without written approval. Total bacterial counts reported as >300cfu are estimated counts only. Date of testing on multi sample reports will be the date of the first sample tested. Data supplied by the customer that may effect the validity of the result is assumed to be correct and is outside the control of the laboratory. These results apply to the sample as received.

Sample Deviating Due To:

A-No sample date, B-No sample time, C-Incorrect sample container, D-Temperature of sample, E/F-Time between sampling & receipt/analysis exceeded. The effect of a deviating sample means that there is a possibility that the result provided may have been compromised.

### The Home of Quality Water Testing

Glenfield Investment Ltd T/A SimplexHealth is a company registered in England. Registered number: 07226894.  
VAT Reg GB126631526. Registered office: 62 York Road, Wellingborough, Northamptonshire, NN29 7SG, United Kingdom.  
SimplexHealth is a registered Trademark of Glenfield Investments Ltd No. 2650789

Page 2 of 2

## LABORATORY REPORT

Order	SH01200(WenningNov)		
Client	BEST/River Wenning Group	Report Date	20/11/2024
Deviating	DEF	Date Sample Taken	05/11/2024
Sampled By	CW	Date Sample Arrived	06/11/2024
Report No	24-15418	Time Sample Taken	09:19

Location	Waters Meet Bridge	Sample No	1783805
<b>Test</b>	<b>Limits</b>	<b>Result</b>	
Total Coliforms, Method B2*, as MPN	As specified by customer	1120 cfu/100mls	
E.coli, Method B2*, as MPN	As specified by customer	388 cfu/100mls	
Intestinal Enterococci, Method B6*	As specified by customer	112 cfu/100mls	
Phosphate*	As specified by customer	<0.050 mgPO <sub>4</sub> /l	
Ammonia*	As specified by customer	0.47 mgNH <sub>3</sub> /l	
Nitrate*	As specified by customer	0.98 mgNO <sub>3</sub> /l	

Location	Clapham Beck AGS	Sample No	1783806
<b>Test</b>	<b>Limits</b>	<b>Result</b>	
Total Coliforms, Method B2*, as MPN	As specified by customer	185 cfu/100mls	
E.coli, Method B2*, as MPN	As specified by customer	63 cfu/100mls	
Intestinal Enterococci, Method B6*	As specified by customer	10 cfu/100mls	
Phosphate*	As specified by customer	<0.050 mgPO <sub>4</sub> /l	
Ammonia*	As specified by customer	0.54 mgNH <sub>3</sub> /l	
Nitrate*	As specified by customer	0.58 mgNO <sub>3</sub> /l	

Location	Eldritch Road Viaduct	Sample No	1783807
<b>Test</b>	<b>Limits</b>	<b>Result</b>	
Total Coliforms, Method B2*, as MPN	As specified by customer	722 cfu/100mls	
E.coli, Method B2*, as MPN	As specified by customer	249 cfu/100mls	
Intestinal Enterococci, Method B6*	As specified by customer	120 cfu/100mls	
Phosphate*	As specified by customer	<0.050 mgPO <sub>4</sub> /l	
Ammonia*	As specified by customer	0.82 mgNH <sub>3</sub> /l	
Nitrate*	As specified by customer	1.10 mgNO <sub>3</sub> /l	

Location	High Bentham Upstream	Sample No	1783808
<b>Test</b>	<b>Limits</b>	<b>Result</b>	
Total Coliforms, Method B2*, as MPN	As specified by customer	1554 cfu/100mls	
E.coli, Method B2*, as MPN	As specified by customer	436 cfu/100mls	
Intestinal Enterococci, Method B6*	As specified by customer	88 cfu/100mls	
Phosphate*	As specified by customer	<0.050 mgPO <sub>4</sub> /l	
Ammonia*	As specified by customer	0.56 mgNH <sub>3</sub> /l	
Nitrate*	As specified by customer	0.90 mgNO <sub>3</sub> /l	

### The Home of Quality Water Testing

Glenfield Investment Ltd T/A SimplexHealth is a company registered in England. Registered number: 07226894.  
VAT Reg GB126631526. Registered office: 62 York Road, Wellingborough, Northamptonshire, NN29 7SG, United Kingdom.  
SimplexHealth is a registered trademark of Glenfield Investments Ltd No. 2650789

## LABORATORY REPORT

Location	High Bentham Downstream	Sample No	1783809
Test	Limits	Result	
Total Coliforms, Method B2*, as MPN	As specified by customer	98100 cfu/100mls	
E.coli, Method B2*, as MPN	As specified by customer	8100 cfu/100mls	
Intestinal Enterococci, Method B6*	As specified by customer	1900 cfu/100mls	
Phosphate*	As specified by customer	0.121 mgPO <sub>4</sub> /l	
Ammonia*	As specified by customer	0.18 mgNH <sub>3</sub> /l	
Nitrate*	As specified by customer	3.19 mgNO <sub>3</sub> /l	

Location	Wennington Bridge	Sample No	1783810
Test	Limits	Result	
Total Coliforms, Method B2*, as MPN	As specified by customer	2420 cfu/100mls	
E.coli, Method B2*, as MPN	As specified by customer	462 cfu/100mls	
Intestinal Enterococci, Method B6*	As specified by customer	137 cfu/100mls	
Phosphate*	As specified by customer	< 0.050 mgPO <sub>4</sub> /l	
Ammonia*	As specified by customer	0.36 mgNH <sub>3</sub> /l	
Nitrate*	As specified by customer	0.95 mgNO <sub>3</sub> /l	

**Authorised by:** L Bird

**Technical Admin Manager**

For and on Behalf of Meridian Science Ltd. (on Behalf of Simplex Health)

UKAS accreditation 2450, Accredited to ISO/EC 17025:2017. BS17025

### Disclaimers:

Tests denoted with a '\*' are not UKAS accredited. '\*\*'Indicates that analysis has been subcontracted to a UKAS testing laboratory. Opinions and interpretations expressed herein are outside the scope of our UKAS accreditation. Time 00:00 indicates no sampling time provided. Sample integrity is only assured from the time of delivery to the laboratory. Results expressed as 0/100mls implies none found in the sample examined. Test results only relate to the sample portion tested. Test reports shall not be reproduced except in full, without written approval. Total bacterial counts reported as >300du are estimated counts only. Date of testing on multi sample reports will be the date of the first sample tested. Data supplied by the customer that may effect the validity of the result is assumed to be correct and is outside the control of the laboratory. These results apply to the sample as received.

Sample Deviating Due To:

A-No sample date, B-No sample time, C-Incorrect sample container, D-Temperature of sample, E/F-Time between sampling & receipt/analysis exceeded.

The effect of a deviating sample means that there is a possibility that the result provided may have been compromised.

The Home of Quality Water Testing

Glenfield Investment Ltd T/A SimplexHealth is a company registered in England. Registered number: 07226894.  
VAT Reg GB126631526. Registered office: 62 York Road, Wellingborough, Northamptonshire, NN29 7SG, United Kingdom.  
SimplexHealth is a registered Trademark of Glenfield Investments Ltd No. 2650789

Page 2 of 2

## LABORATORY REPORT

Order	SH001201(WenningDec)		
Client	BEST/River Wenning Group	Report Date	13/12/2024
Deviating	DE	Date Sample Taken	03/12/2024
Sampled By	CW	Date Sample Arrived	04/12/2024
Report No	24-16853	Time Sample Taken	09:20

Location	Waters Meet Bridge		Sample No	1793117
<b>Test</b>	<b>Limits</b>	<b>Result</b>		
Total Coliforms, Method B2*, as MPN	As specified by customer	2400 cfu/100mls		
E.coli, Method B2*, as MPN	As specified by customer	462 cfu/100mls		
Intestinal Enterococci, Method B6*	As specified by customer	147 cfu/100mls		
Phosphate*	As specified by customer	<0.050 mgPO4/l		
Ammonia*	As specified by customer	0.14 mgNH3/l		
Nitrate*	As specified by customer	0.13 mgNO3/l		

Location	Clapham Beck AGS		Sample No	1793118
<b>Test</b>	<b>Limits</b>	<b>Result</b>		
Total Coliforms, Method B2*, as MPN	As specified by customer	462 cfu/100mls		
E.coli, Method B2*, as MPN	As specified by customer	60 cfu/100mls		
Intestinal Enterococci, Method B6*	As specified by customer	28 cfu/100mls		
Phosphate*	As specified by customer	<0.050 mgPO4/l		
Ammonia*	As specified by customer	0.23 mgNH3/l		
Nitrate*	As specified by customer	0.14 mgNO3/l		

Location	Eldritch Road Viaduct		Sample No	1793119
<b>Test</b>	<b>Limits</b>	<b>Result</b>		
Total Coliforms, Method B2*, as MPN	As specified by customer	921 cfu/100mls		
E.coli, Method B2*, as MPN	As specified by customer	236 cfu/100mls		
Intestinal Enterococci, Method B6*	As specified by customer	97 cfu/100mls		
Phosphate*	As specified by customer	<0.050 mgPO4/l		
Ammonia*	As specified by customer	0.16 mgNH3/l		
Nitrate*	As specified by customer	0.13 mgNO3/l		

Location	High Bentham Upstream		Sample No	1793120
<b>Test</b>	<b>Limits</b>	<b>Result</b>		
Total Coliforms, Method B2*, as MPN	As specified by customer	1554 cfu/100mls		
E.coli, Method B2*, as MPN	As specified by customer	366 cfu/100mls		
Intestinal Enterococci, Method B6*	As specified by customer	157 cfu/100mls		
Phosphate*	As specified by customer	2.74 mgPO4/l		
Ammonia*	As specified by customer	0.12 mgNH3/l		
Nitrate*	As specified by customer	2.41 mgNO3/l		

The Home of Quality Water Testing

Glenfield Investment Ltd T/A Simplex-Health is a company registered in England. Registered number: 07226894.  
VAT Reg GB1 26631526. Registered office: 62 York Road, Wellingborough, Northamptonshire, NN29 7SG, United Kingdom.  
Simplex-Health is a registered Trademark of Glenfield Investments Ltd No. 2650789

Page 1 of 3

## LABORATORY REPORT

Location	High Bentham Downstream		Sample No	1793121
Test	Limits	Result		
Total Coliforms, Method B2*, as MPN	As specified by customer	2420 cfu/100mls		
E.coli, Method B2*, as MPN	As specified by customer	411 cfu/100mls		
Intestinal Enterococci, Method B6*	As specified by customer	189 cfu/100mls		
Phosphate*	As specified by customer	0.914 mgPO4/l		
Ammonia*	As specified by customer	0.21 mgNH3/l		
Nitrate*	As specified by customer	4.30 mgNO3/l		

Location	Wennington Bridge		Sample No	1793122
Test	Limits	Result		
Total Coliforms, Method B2*, as MPN	As specified by customer	526 cfu/100mls		
E.coli, Method B2*, as MPN	As specified by customer	871 cfu/100mls		
Intestinal Enterococci, Method B6*	As specified by customer	208 cfu/100mls		
Phosphate*	As specified by customer	0.765 mgPO4/l		
Ammonia*	As specified by customer	0.12 mgNH3/l		
Nitrate*	As specified by customer	2.17 mgNO3/l		

**Authorised by:** L Bird

**Technical Admin Manager**

For and on Behalf of Meridian Science Ltd. (on Behalf of Simplex Health)

UKAS accreditation 2450, Accredited to ISO/IEC 17025:2017, BS17025

### Disclaimers:

Tests denoted with a "\*" are not UKAS accredited. \*\*Indicates that analysis has been subcontracted to a UKAS testing laboratory. Opinions and interpretations expressed herein are outside the scope of our UKAS accreditation. Time 00:00 indicates no sampling time provided. Sample integrity is only assured from the time of delivery to the laboratory. Results expressed as 0/100mls implies none found in the sample examined. Test results only relate to the sample portion tested. Test reports shall not be reproduced except in full, without written approval. Total bacterial counts reported as >300cfu are estimated counts only. Date of testing on multi sample reports will be the date of the first sample tested. Data supplied by the customer that may effect the validity of the result is assumed to be correct and is outside the control of the laboratory. These results apply to the sample as received.

Sample Deviating Due To:

A-No sample date, B-No sample time, C-Incorrect sample container, D-Temperature of sample, E/F-Time between sampling & receipt/analysis exceeded.

The effect of a deviating sample means that there is a possibility that the result provided may have been compromised.



## LABORATORY REPORT

Order	SH1222 (WenningJan)		
Client	Chris Wilcock	Report Date	16/01/2025
Deviating	EF	Date Sample Taken	07/01/2025
Sampled By	CW	Date Sample Arrived	08/01/2025
Report No	25-00201	Time Sample Taken	10:25

Location	Waters Meet Bridge		Sample No	1800735
Test	Limits		Result	
Total Coliforms, Method B2*, as MPN	As specified by customer		4150 cfu/100mls	
E.coli, Method B2*, as MPN	As specified by customer		580 cfu/100mls	
Intestinal Enterococci, Method B6*	As specified by customer		376 cfu/100mls	
Phosphate*	As specified by customer		<0.050 mgPO4/l	
Ammonia*	As specified by customer		0.14 mgNH3/l	
Nitrate*	As specified by customer		1.77 mgNO3/l	

Location	Clapham Beck AGS		Sample No	1800736
Test		Limits	Result	
Total Coliforms, Method B2*, as MPN		As specified by customer	33 cfu/100mls	
E.coli, Method B2*, as MPN		As specified by customer	366 cfu/100mls	
Intestinal Enterococci, Method B6*		As specified by customer	36 cfu/100mls	
Phosphate*		As specified by customer	< 0.050 mgPO4/l	
Ammonia*		As specified by customer	0.12 mgNH3/l	
Nitrate*		As specified by customer	0.81 mgNO3/l	

Location	Eldritch Road Viaduct		Sample No	1800737
Test		Limits	Result	
Total Coliforms, Method B2 *, as MPN		As specified by customer	995 cfu/100mls	
E.coli, Method B2 *, as MPN		As specified by customer	518 cfu/100mls	
Intestinal Enterococci, Method B6 *		As specified by customer	193 cfu/100mls	
Phosphate*		As specified by customer	< 0.050 mgPO4/l	
Ammonia*		As specified by customer	0.17 mgNH3/l	
Nitrate*		As specified by customer	1.06 mgNO3/l	

Location	High Bentham Upstream		Sample No	1800738
Test		Limits	Result	
Total Coliforms, Method B2*, as MPN		As specified by customer	2055 cfu/100mls	
E.coli, Method B2*, as MPN		As specified by customer	1047 cfu/100mls	
Intestinal Enterococci, Method B6*		As specified by customer	524 cfu/100mls	
Phosphate*		As specified by customer	< 0.050 mgPO4/l	
Ammonia*		As specified by customer	0.12 mgNH3/l	
Nitrate*		As specified by customer	1.41 mgNO3/l	

The Home of Quality Water Testing

Glenfield Investment Ltd T/A Simplex-Health is a company registered in England. Registered number: 07226894.  
VAT Reg GB126631526. Registered office: 62 York Road, Wellingborough, Northamptonshire, NN29 7SG, United Kingdom.  
SimplexHealth is a registered Trademark of Glenfield Investments Ltd No. 2650789

Page 1 of 2

## LABORATORY REPORT

Location	High Bentham Downstream	Sample No	1800739
Test	Limits	Result	
Total Coliforms, Method B2*, as MPN	As specified by customer	13800 cfu/100mls	
E.coli, Method B2*, as MPN	As specified by customer	2900 cfu/100mls	
Intestinal Enterococci, Method B6*	As specified by customer	1264 cfu/100mls	
Phosphate*	As specified by customer	0.128 mgPO <sub>4</sub> /l	
Ammonia*	As specified by customer	0.17 mgNH <sub>3</sub> /l	
Nitrate*	As specified by customer	2.39 mgNO <sub>3</sub> /l	

Location	Wennington Bridge	Sample No	1800740
Test	Limits	Result	
Total Coliforms, Method B2*, as MPN	As specified by customer	3245 cfu/100mls	
E.coli, Method B2*, as MPN	As specified by customer	867 cfu/100mls	
Intestinal Enterococci, Method B6*	As specified by customer	456 cfu/100mls	
Phosphate*	As specified by customer	< 0.050 mgPO <sub>4</sub> /l	
Ammonia*	As specified by customer	0.16 mgNH <sub>3</sub> /l	
Nitrate*	As specified by customer	1.45 mgNO <sub>3</sub> /l	

Authorised by: L Bird

Technical Admin Manager

For and on Behalf of Mercian Science Ltd. (on Behalf of Simplex Health)

UKAS accreditation 2450, Accredited to ISO/EC 17025:2017. BS17025

### Disclaimers:

Tests denoted with a "\*" are not UKAS accredited. \*\*Indicates that analysis has been subcontracted to a UKAS testing laboratory. Opinions and interpretations expressed herein are outside the scope of our UKAS accreditation. Time 00:00 indicates no sampling time provided. Sample integrity is only assured from the time of delivery to the laboratory. Results expressed as 0/100mls implies none found in the sample examined. Test results only relate to the sample portion tested. Test reports shall not be reproduced except in full, without written approval. Total bacterial counts reported as >300cfu are estimated counts only. Date of testing on multi sample reports will be the date of the first sample tested. Data supplied by the customer that may affect the validity of the result is assumed to be correct and is outside the control of the laboratory. These results apply to the sample as received.

Sample Deviating Due To:

A-No sample date, B-No sample time, C-incorrect sample container, D-Temperature of sample, E/F-Time between sampling & receipt/analysis exceeded.  
The effect of a deviating sample means that there is a possibility that the result provided may have been compromised.



## LABORATORY REPORT

Order	SH1222 (WenningFeb)		
Client	Chris Wilcock	Report Date	18/02/2025
Deviating	F	Date Sample Taken	04/02/2025
Sampled By	CW	Date Sample Arrived	05/02/2025
Report No	25-01673	Time Sample Taken	09:42

Location	Waters Meet Bridge		Sample No	1809292
	<b>Test</b>	<b>Limits</b>	<b>Result</b>	
Total Coliforms, Method B2*, as MPN	As specified by customer		388 cfu/100mls	
E.coli, Method B2*, as MPN	As specified by customer		64 cfu/100mls	
Intestinal Enterococci, Method B6*	As specified by customer		57 cfu/100mls	
Phosphate*	As specified by customer		<0.050 mgPO4/l	
Ammonia*	As specified by customer		0.19 mgNH3/l	
Nitrate*	As specified by customer		1.27 mgNO3/l	

Location	Clapham Beck AGS		Sample No	1809293
	<b>Test</b>	<b>Limits</b>	<b>Result</b>	
Total Coliforms, Method B2*, as MPN	As specified by customer		86 cfu/100mls	
E.coli, Method B2*, as MPN	As specified by customer		13 cfu/100mls	
Intestinal Enterococci, Method B6*	As specified by customer		5 cfu/100mls	
Phosphate*	As specified by customer		<0.050 mgPO4/l	
Ammonia*	As specified by customer		0.33 mgNH3/l	
Nitrate*	As specified by customer		0.78 mgNO3/l	

Location	Eldritch Road Viaduct		Sample No	1809294
	<b>Test</b>	<b>Limits</b>	<b>Result</b>	
Total Coliforms, Method B2*, as MPN	As specified by customer		411 cfu/100mls	
E.coli, Method B2*, as MPN	As specified by customer		262 cfu/100mls	
Intestinal Enterococci, Method B6*	As specified by customer		55 cfu/100mls	
Phosphate*	As specified by customer		<0.050 mgPO4/l	
Ammonia*	As specified by customer		0.29 mgNH3/l	
Nitrate*	As specified by customer		1.08 mgNO3/l	

Location	High Bentham Upstream		Sample No	1809295
	<b>Test</b>	<b>Limits</b>	<b>Result</b>	
Total Coliforms, Method B2*, as MPN	As specified by customer		1120 cfu/100mls	
E.coli, Method B2*, as MPN	As specified by customer		518 cfu/100mls	
Intestinal Enterococci, Method B6*	As specified by customer		68 cfu/100mls	
Phosphate*	As specified by customer		<0.050 mgPO4/l	
Ammonia*	As specified by customer		0.25 mgNH3/l	
Nitrate*	As specified by customer		1.07 mgNO3/l	

The Home of Quality Water Testing

Glenfield Investment Ltd T/A Simplex-Health is a company registered in England. Registered number: 07226894.  
VAT Reg GB126631526. Registered office: 62 York Road, Wellingborough, Northamptonshire, NN29 7SG, United Kingdom.  
SimplexHealth is a registered trademark of Glenfield Investments Ltd No. 2650789

## LABORATORY REPORT

Location	High Bentham Downstream	Sample No	1809296
Test	Limits	Result	
Total Coliforms, Method B2*, as MPN	As specified by customer	2300 cfu/100mls	
E.coli, Method B2*, as MPN	As specified by customer	800 cfu/100mls	
Intestinal Enterococci, Method B6*	As specified by customer	123 cfu/100mls	
Phosphate*	As specified by customer	0.120 mgPO <sub>4</sub> /l	
Ammonia*	As specified by customer	0.29 mgNH <sub>3</sub> /l	
Nitrate*	As specified by customer	1.59 mgNO <sub>3</sub> /l	

Location	Wennington Bridge	Sample No	1809297
Test	Limits	Result	
Total Coliforms, Method B2*, as MPN	As specified by customer	1120 cfu/100mls	
E.coli, Method B2*, as MPN	As specified by customer	489 cfu/100mls	
Intestinal Enterococci, Method B6*	As specified by customer	47 cfu/100mls	
Phosphate*	As specified by customer	<0.050 mgPO <sub>4</sub> /l	
Ammonia*	As specified by customer	0.23 mgNH <sub>3</sub> /l	
Nitrate*	As specified by customer	1.12 mgNO <sub>3</sub> /l	

Authorised by: L Bird

Technical Admin Manager

For and on Behalf of Meridian Science Ltd. (on Behalf of Simplex Health)

UKAS accreditation 2450, Accredited to ISO/EC 17025:2017. BS17025

### Disclaimers:

Tests denoted with a "\*" are not UKAS accredited. \*\*Indicates that analysis has been subcontracted to a UKAS testing laboratory. Opinions and interpretations expressed herein are outside the scope of our UKAS accreditation. Time 00:00 indicates no sampling time provided. Sample integrity is only assured from the time of delivery to the laboratory. Results expressed as 0/100mls implies none found in the sample examined. Test results only relate to the sample portion tested. Test reports shall not be reproduced except in full, without written approval. Total bacterial counts reported as >300cfu are estimated counts only. Date of testing on multi sample reports will be the date of the first sample tested. Data supplied by the customer that may affect the validity of the result is assumed to be correct and is outside the control of the laboratory. These results apply to the sample as received.

Sample Deviating Due To:

A-No sample date, B-No sample time, C-incorrect sample container, D-Temperature of sample, E/F-time between sampling & receipt/analysis exceeded.  
The effect of a deviating sample means that there is a possibility that the result provided may have been compromised.

The Home of Quality Water Testing

Glenfield Investment Ltd T/A SimplexHealth is a company registered in England. Registered number: 07226894.  
VAT Reg GB126631526. Registered office: 62 York Road, Wellingborough, Northamptonshire, NN29 7SG, United Kingdom.  
SimplexHealth is a registered Trademark of Glenfield Investments Ltd No. 2650789

## LABORATORY REPORT

Order	SH1229 (Wenning March)		
Client	Chris Wilcock	Report Date	21/03/2025
Deviating	DEF	Date Sample Taken	04/03/2025
Sampled By	JS	Date Sample Arrived	05/03/2025
Report No	25-03129	Time Sample Taken	09:15

Location	Waters Meet Bridge		Sample No	1818267
<b>Test</b>	<b>Limits</b>	<b>Result</b>		
Total Coliforms, Method B2*, as MPN	As specified by customer	687 cfu/100mls		
E.coli, Method B2*, as MPN	As specified by customer	249 cfu/100mls		
Intestinal Enterococci, Method B6*	As specified by customer	66 cfu/100mls		
Phosphate*	As specified by customer	<0.050 mgPO4/l		
Ammonia*	As specified by customer	0.16 mgNH3/l		
Nitrate*	As specified by customer	1.87 mgNO3/l		

Location	Clapham Beck AGS		Sample No	1818268
Test		Limits	Result	
Total Coliforms, Method B2*, as MPN		As specified by customer	11 cfu/100mls	
E.coli, Method B2*, as MPN		As specified by customer	0 cfu/100mls	
Intestinal Enterococci, Method B6*		As specified by customer	3 cfu/100mls	
Phosphate*		As specified by customer	<0.050 mgPO4/l	
Ammonia*		As specified by customer	0.18 mgNH3/l	
Nitrate*		As specified by customer	0.98 mgNO3/l	

Location	Eldritch Road Viaduct		Sample No	1818269
Test	Limits		Result	
Total Coliforms, Method B2*, as MPN	As specified by customer		462 cfu/100mls	
E.coli, Method B2*, as MPN	As specified by customer		116 cfu/100mls	
Intestinal Enterococci, Method B6*	As specified by customer		19 cfu/100mls	
Phosphate*	As specified by customer		<0.050 mgPO4/l	
Ammonia*	As specified by customer		0.16 mgNH3/l	
Nitrate*	As specified by customer		1.71 mgNO3/l	

Location	High Bentham Upstream		Sample No	1818270
Test		Limits	Result	
Total Coliforms, Method B2*, as MPN		As specified by customer	276 cfu/100mls	
E.coli, Method B2*, as MPN		As specified by customer	147 cfu/100mls	
Intestinal Enterococci, Method B6*		As specified by customer	36 cfu/100mls	
Phosphate*		As specified by customer	<0.050 mgPO4/l	
Ammonia*		As specified by customer	0.17 mgNH3/l	
Nitrate*		As specified by customer	1.48 mgNO3/l	

The Home of Quality Water Testing

Glenfield Investment Ltd T/A SimplexHealth is a company registered in England. Registered number: 07226894.  
VAT Reg GB126631526. Registered office: 62 York Road Wellingborough, Northamptonshire, NN29 7SG, United Kingdom.  
SimplexHealth is a registered Trademark of Glenfield Investments Ltd No. 2650789

## LABORATORY REPORT

Location	High Bentham Downstream		Sample No	1818271
Test	Limits	Result		
Total Coliforms, Method B2*, as MPN	As specified by customer	46200 cfu/100mls		
E.coli, Method B2*, as MPN	As specified by customer	14400 cfu/100mls		
Intestinal Enterococci, Method B6*	As specified by customer	2688 cfu/100mls		
Phosphate*	As specified by customer	0.822 mgPO <sub>4</sub> /l		
Ammonia*	As specified by customer	0.42 mgNH <sub>3</sub> /l		
Nitrate*	As specified by customer	5.31 mgNO <sub>3</sub> /l		

Location	Wennington Bridge		Sample No	1818272
Test	Limits	Result		
Total Coliforms, Method B2*, as MPN	As specified by customer	479 cfu/100mls		
E.coli, Method B2*, as MPN	As specified by customer	286 cfu/100mls		
Intestinal Enterococci, Method B6*	As specified by customer	107 cfu/100mls		
Phosphate*	As specified by customer	< 0.050 mgPO <sub>4</sub> /l		
Ammonia*	As specified by customer	0.16 mgNH <sub>3</sub> /l		
Nitrate*	As specified by customer	1.52 mgNO <sub>3</sub> /l		

**Authorised by:** L Bird

**Technical Admin Manager**

For and on Behalf of Meridian Science Ltd. (on Behalf of Simplex Health)

UKAS accreditation 2450, Accredited to ISO/EC 17025:2017. BS17025

### Disclaimers:

Tests denoted with a "\*" are not UKAS accredited. \*\*Indicates that analysis has been subcontracted to a UKAS testing laboratory. Opinions and interpretations expressed herein are outside the scope of our UKAS accreditation. Time 00:00 indicates no sampling time provided. Sample integrity is only assured from the time of delivery to the laboratory. Results expressed as 0/100mls implies none found in the sample examined. Test results only relate to the sample portion tested. Test reports shall not be reproduced except in full, without written approval. Total bacterial counts reported as >300cfu are estimated counts only. Date of testing on multi sample reports will be the date of the first sample tested. Data supplied by the customer that may affect the validity of the result is assumed to be correct and is outside the control of the laboratory. These results apply to the sample as received.

Sample Deviating Due To:

A-No sample date, B-No sample time, C-incorrect sample container, D-Temperature of sample, E/F-Time between sampling & receipt/analysis exceeded.  
The effect of a deviating sample means that there is a possibility that the result provided may have been compromised.

The Home of Quality Water Testing

Glenfield Investment Ltd T/A SimplexHealth is a company registered in England. Registered number: 07226894.  
VAT Reg GB126631526. Registered office: 62 York Road, Wellingborough, Northamptonshire, NN29 7SG, United Kingdom.  
SimplexHealth is a registered Trademark of Glenfield Investments Ltd No. 2650789

## LABORATORY REPORT

Order	SH01251 (April)	Report Date	11/04/2025
Client	Chris Wilcock	Date Sample Taken	01/04/2025
Deviating	DEF	Date Sample Arrived	02/04/2025
Sampled By	JMS	Time Sample Taken	09:25
Report No	25-04787		

Location	Waters Meet Bridge	Sample No	1827028
Test	Limits	Result	
Total Coliforms, Method B2*, as MPN	As specified by customer	1300 cfu/100mls	
E.coli, Method B2*, as MPN	As specified by customer	462 cfu/100mls	
Intestinal Enterococci, Method B6*	As specified by customer	233 cfu/100mls	
Phosphate*	As specified by customer	< 0.050 mgPO4/l	
Ammonia*	As specified by customer	0.24 mgNH3/l	
Nitrate*	As specified by customer	0.31 mgNO3/l	

Location	Clapham Beck AGS	Sample No	1827029
Test	Limits	Result	
Total Coliforms, Method B2*, as MPN	As specified by customer	109 cfu/100mls	
E.coli, Method B2*, as MPN	As specified by customer	21 cfu/100mls	
Intestinal Enterococci, Method B6*	As specified by customer	8 cfu/100mls	
Phosphate*	As specified by customer	< 0.050 mgPO4/l	
Ammonia*	As specified by customer	0.21 mgNH3/l	
Nitrate*	As specified by customer	0.34 mgNO3/l	

Location	Eldritch Road Viaduct	Sample No	1827030
Test	Limits	Result	
Total Coliforms, Method B2*, as MPN	As specified by customer	687 cfu/100mls	
E.coli, Method B2*, as MPN	As specified by customer	173 cfu/100mls	
Intestinal Enterococci, Method B6*	As specified by customer	95 cfu/100mls	
Phosphate*	As specified by customer	< 0.050 mgPO4/l	
Ammonia*	As specified by customer	0.25 mgNH3/l	
Nitrate*	As specified by customer	0.50 mgNO3/l	

Location	High Bentham Upstream	Sample No	1827031
Test	Limits	Result	
Total Coliforms, Method B2*, as MPN	As specified by customer	89 cfu/100mls	
E.coli, Method B2*, as MPN	As specified by customer	34 cfu/100mls	
Intestinal Enterococci, Method B6*	As specified by customer	22 cfu/100mls	
Phosphate*	As specified by customer	< 0.050 mgPO4/l	
Ammonia*	As specified by customer	0.26 mgNH3/l	
Nitrate*	As specified by customer	0.35 mgNO3/l	

The Home of Quality Water Testing

Glenfield Investment Ltd T/A SimplexHealth is a company registered in England. Registered number: 07226894.  
VAT Reg GB126631525. Registered office: 62 York Road, Wellingborough, Northamptonshire, NN29 7SG, United Kingdom.  
SimplexHealth is a registered Trademark of Glenfield Investments Ltd No. 2650789

Page 1 of 2

## LABORATORY REPORT

Location	High Bentham Downstream	Sample No	1827032
Test	Limits	Result	
Total Coliforms, Method B2*, as MPN	As specified by customer	10700 cfu/100mls	
E.coli, Method B2*, as MPN	As specified by customer	1987 cfu/100mls	
Intestinal Enterococci, Method B6*	As specified by customer	704 cfu/100mls	
Phosphate*	As specified by customer	0.457 mgPO <sub>4</sub> /l	
Ammonia*	As specified by customer	0.33 mgNH <sub>3</sub> /l	
Nitrate*	As specified by customer	1.98 mgNO <sub>3</sub> /l	

Location	Wenington Bridge	Sample No	1827033
Test	Limits	Result	
Total Coliforms, Method B2*, as MPN	As specified by customer	614 cfu/100mls	
E.coli, Method B2*, as MPN	As specified by customer	157 cfu/100mls	
Intestinal Enterococci, Method B6*	As specified by customer	46 cfu/100mls	
Phosphate*	As specified by customer	<0.050 mgPO <sub>4</sub> /l	
Ammonia*	As specified by customer	0.21 mgNH <sub>3</sub> /l	
Nitrate*	As specified by customer	0.35 mgNO <sub>3</sub> /l	

Authorised by: L Bird

Technical Admin Manager

For and on Behalf of Meridian Science Ltd. (on Behalf of Simplex Health)

UKAS accreditation 2450, Accredited to ISO/EC 17025:2017, BS17025

### Disclaimers:

Tests denoted with a "\*" are not UKAS accredited. \*\*Indicates that analysis has been subcontracted to a UKAS testing laboratory. Opinions and interpretations expressed herein are outside the scope of our UKAS accreditation. Time 00:00 indicates no sampling time provided. Sample integrity is only assured from the time of delivery to the laboratory. Results expressed as 0/100mls implies none found in the sample examined. Test results only relate to the sample portion tested. Test reports shall not be reproduced except in full, without written approval. Total bacterial counts reported as >300cfu are estimated counts only. Date of testing on multi sample reports will be the date of the first sample tested. Data supplied by the customer that may affect the validity of the result is assumed to be correct and is outside the control of the laboratory. These results apply to the sample as received.

Sample Deviating Due To:

A-No sample date, B-No sample time, C-incorrect sample container, D-Temperature of sample, E/F-Time between sampling & receipt/analysis exceeded.

The effect of a deviating sample means that there is a possibility that the result provided may have been compromised.

The Home of Quality Water Testing

Glenfield Investment Ltd T/A SimplexHealth is a company registered in England. Registered number: 07226894.  
VAT Reg GB126631526. Registered office: 62 York Road, Wellingborough, Northamptonshire, NN29 7SG, United Kingdom.  
SimplexHealth is a registered Trademark of Glenfield Investments Ltd No. 2650789

Page 2 of 2